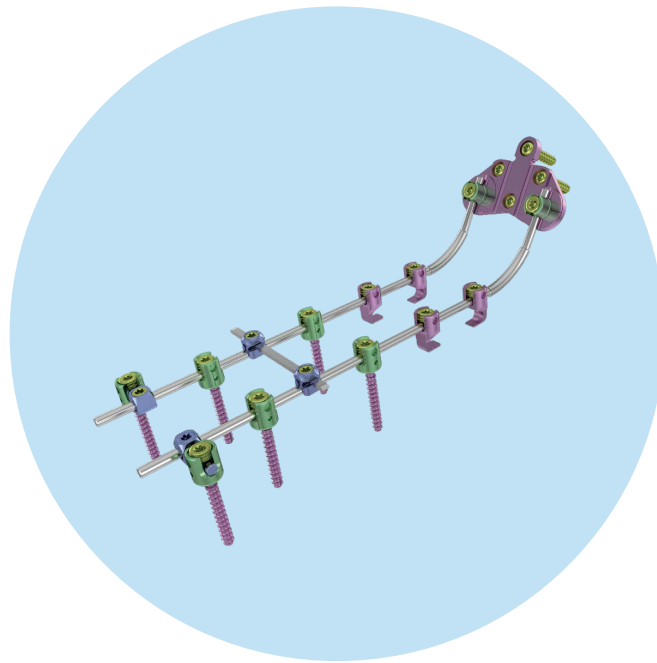
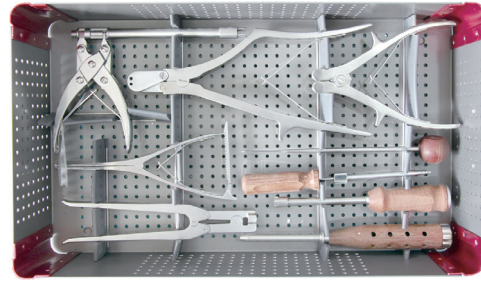
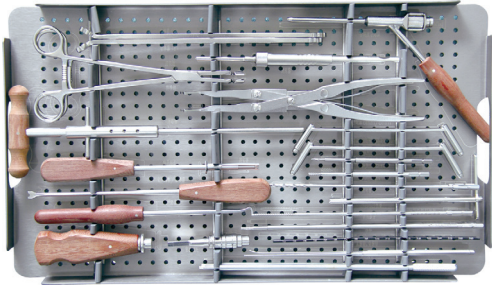


KCO 3.2 ROD SCREW SYSTEM INSTRUMENT SET



KCO 3.2 Rod Screw System Instrument Set

93219901



93210101 Straight Probe



93210102 Curved Probe



93210201 Awl



93210301 Marker (Cylindrical)



93210302 Marker (Spherical)



93210401 Marker Inserter



93210501 Pedicle Probe



93210601 Drill Bit $\Phi 2.4 \times 200$
(Quick Coupling)



93210701 Tap (Quick Coupling)
HB3.5



93210802 Set Screw Holder
T3.4



93210902 Set Screw Wrench T3.4
(Quick Coupling)



91150105 Quick Coupling Handle
(Straight)

KCO 3.2 Rod Screw System Instrument Set

93219901



91150201 Quick Coupling Adapter



93211201 Tap Sleeve



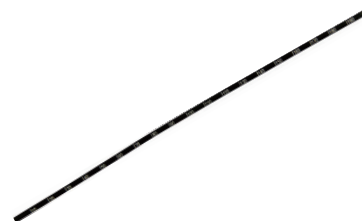
93211301 Multiaxial Pedicle
Screwdriver



93211401 Screw Adjuster
/Rod Pusher



93211501 Depth Gauge



93211601 Rod Template



93211701 Rod Holder



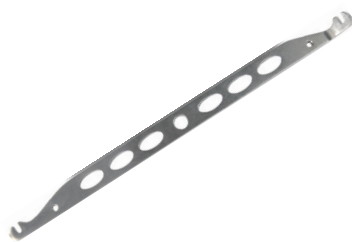
93211801 Hook Holder



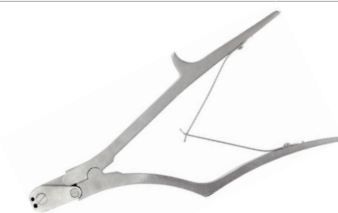
93211901 Anti-rotation Sleeve



93212001 Rod Bender (Left)



93212002 Rod Bender (Right)



93212101 Rod Cutter



93212201 Compressor



93212301 Distractor



93212401 Occipital Guide 6/8

KCO 3.2 Rod Screw System Instrument Set

93219901



93212402 Occipital Guide 10/12



93212501 Occipital Drill Φ 2.4
(Quick Coupling)



93212601 Occipital Tap HB4.0
(Quick Coupling)



93212701 Rod/Plate Bender



93213401 Screw Holding Sleeve



91132902 Torx Screwdriver T2.9



93213001 Hook Awl



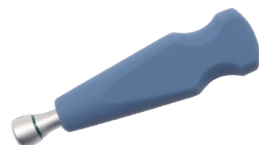
93213101 Guide with Scale



93213201 Reduction Gun



93213301 Plate Bending Plier



91150115 Locking Straight Handle



91133405 Quick Coupling Screwdriver
T3.4×120mm